



# French M O U N T A I N Commons

P R E M I U M O U T L E T C E N T E R



# Log Jam Factory Outlets

*located in beautiful Lake George, NY*

**Ed Moore, Jr. • Director of Operations**

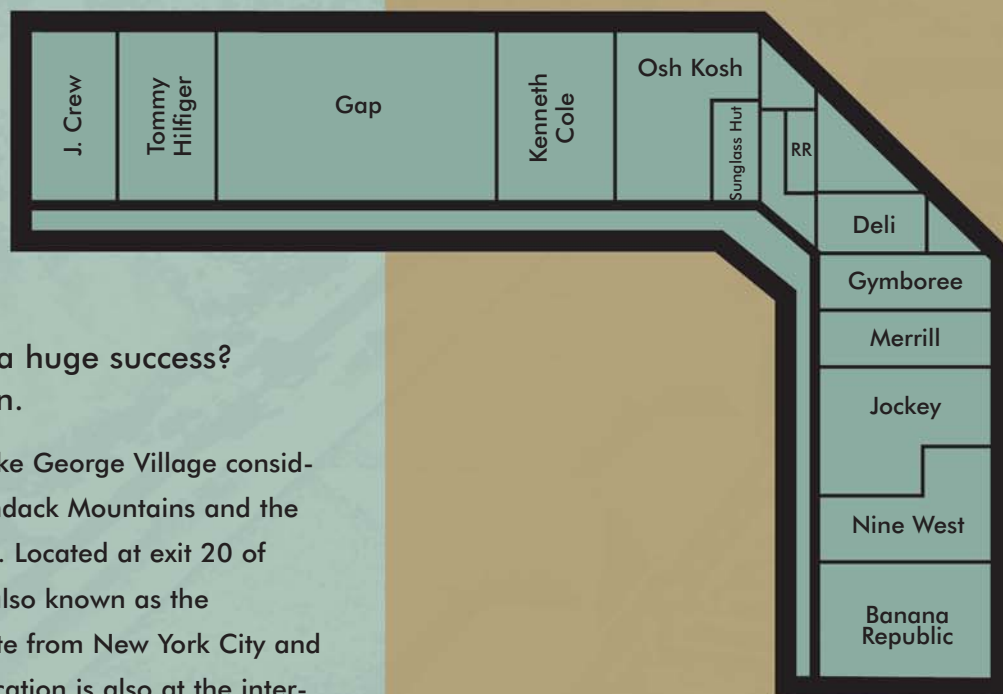
1439 State Route 9, Lake George, New York 12859

Phone 518-792-1483 Fax 518-792-1731

*edt@capital.net* or visit us at *www.frenchmountaincommons.com*



# French MOUNTAIN Commons



# Log Jam Factory Outlets

Why are our outlets such a huge success?  
Location, location, location.

We are three miles south of Lake George Village considered the gateway to the Adirondack Mountains and the 6-million acre Adirondack Park. Located at exit 20 of New York State Interstate 87 (also known as the Northway); the most direct route from New York City and New Jersey to Canada. Our location is also at the intersection of Routes 9 and 149 — a direct route to Rutland the business capital of Vermont, which is home to several world-famous ski resorts.

### Groundskeeping & Maintenance

The grounds are kept to the same high standards as we keep the building with. Cascading flowering baskets abound, while new shrubs and flowers are planted each spring. There are benches and tables under the walkway where your customers can rest while they shop. Your customers can even enjoy the homemade sandwiches, soups and salads that are made at our very own Commons Deli.



### Local attractions and events.

Our location affords us many wonderful things to do and see including:

- Lake George
- Saratoga Race Course
- Spectacular Fall Foliage
- Winter Carnivals
- Skiing
- Adirondack Balloon Festival
- Americade Motorcycle Rally
- And so much more!

### Local colleges and universities

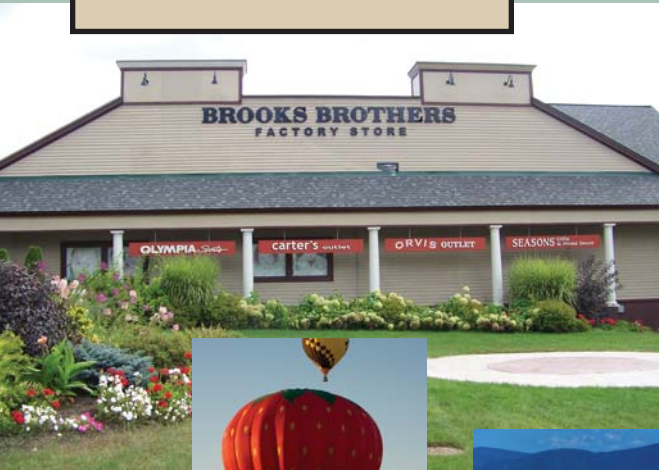
within 25 miles	
Adirondack Community College	3500 Students
Skidmore College	2850
within 50 miles	
Albany State	17,000
Castleton (Vermont)	1,900
St. Rose	4,500
Siena	2,900
R.P.I	6,000
Union College	3,000
within 100 miles	
Plattsburg State	5,400
Saint Michaels in Vermont	1,900
University of Vermont	9,400

### FMC Sales per square foot

2003	- \$330.20
2004	- \$349.50
2005	- \$341.50
2006	- \$358.06
2007	- \$406.44
2008	- \$421.72
2009	- \$424.41



**2 Great Outlet Centers...  
Under 1 Group**  
french mountains commons and log jam  
factory outlets now managed by the ownership team  
from the french mountain commons center



A boat tour of Lake George, a day of fun at the Great Escape or 18 holes of golf on a championship course with a breath-taking view. Early morning liftoff at the Adirondack Balloon Festival, a tour of the amazing leaf spectacular of the North Country with lunch at a quaint family-owned restaurant. Skiing the Adirondacks or a Winter day touring the Hyde Art Collection. For every season — seasons you can only find in Upstate New York — there is something for you, and we have the package for you.



# How to get here...

## Driving Directions

Conveniently located just 1/4 mile north of Exit 20 of Interstate 87 (Adirondack Northway) three miles south of Lake George Village and 20 miles north of Saratoga Springs.



## Then there...

- Albany, NY . . . . . 51
- Bingamton, NY . . . . . 162
- Boston, MA . . . . . 263
- Buffalo, NY . . . . . 311
- Burlington, VT . . . . . 94
- Columbus, OH . . . . . 623
- Hartford, CT . . . . . 147
- Montreal . . . . . 173
- New York City, NY . . . . . 214
- Philadelphia, PA . . . . . 279
- Poughkeepsie, NY . . . . . 122
- Quebec . . . . . 312
- Rutland, VT . . . . . 44
- Syracuse, NY . . . . . 152
- Toronto, Ontario . . . . . 393
- Washington, DC . . . . . 413



## French Mountain Commons • Log Jam Outlet Center

1439 State Route 9, Lake George, New York 12859  
Phone 518-792-1483 Fax 518-792-1731  
or visit us at [www.frenchmountaincommons.com](http://www.frenchmountaincommons.com)